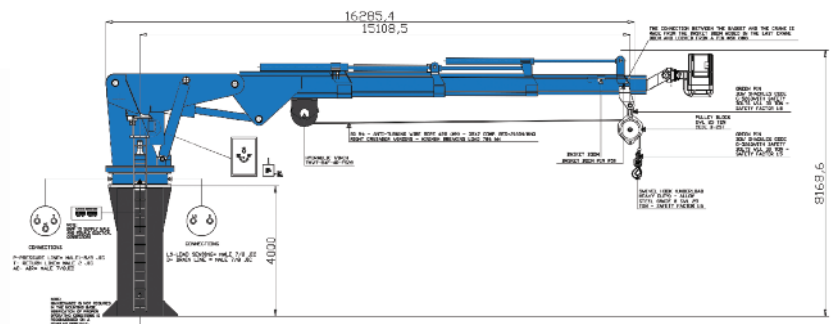
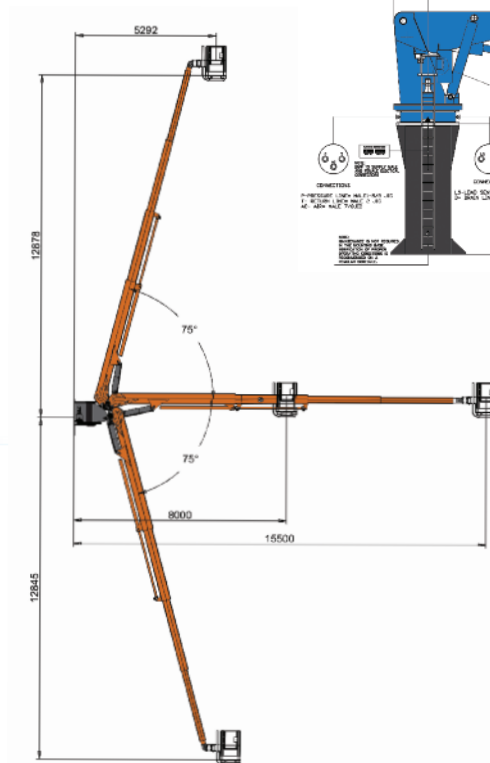




DMWMARINEGROUP



MARINE cranes

KNUCKLE BOOM | TELESCOPING | SMALL MARINE | SPECIAL APPLICATION

www.dmwmarinegroup.com



DMW Marine Group: Top Quality for Ship and Offshore Cranes

A complete crane range designed for hoisting operations in a marine environment. They are heavy duty and designed with emphasis on the side load force of the marine operations taking into consideration the stresses, the load conditions and the environment of the marine operations.

- ▶ All DMW Marine Group cranes have been specifically designed and manufactured to work in a marine environment.
- ▶ DMW Marine Group builds cranes only for ship and offshore application.
- ▶ DMW Marine Group offers a top level of servicing in equipment specifying, technical support, state-of-the-art engineering, work shop facilities and after sale service.
- ▶ DMW Marine Group products contain:
 - Quality • Innovation • Reliability • Experience

DMW Marine Group: TOP QUALITY at the Right Price!

These hydraulic cranes are designed to outlast and outperform the competition. Whether you are in the shipping or offshore industry, no other organizations has a wider selection of different crane models, ranging from 5 to approximately 1000 ton meter (tm). (New models are coming soon).

We always focus on the clients' specific needs by offering the best solution based on our extensive and flexible modular crane concept.

The marine/offshore crane design is founded on the modular approach within and transversal to the crane ranges. This allows a quick response to the market needs, reduction of parts in stock, and a constant top quality level of the final product for the various models offered.

The design of these cranes has been specifically developed and improved for operation in a marine environment with all the relevant aspects considered when working with different heel and trim conditions in a shipboard or offshore situation.

We always have different cranes in stock with short delivery times.

DMW Marine Group's State-of-the-Art Design and Attention to Detail Increase Service Life While Significantly Reducing Maintenance Costs.

The design of the DMW Marine Group cranes has been developed considering the stresses, the load conditions and the environment of the marine operations.

DMW Marine Group designs and builds cranes only for the marine and offshore environment. For this reason, no part of a DMW Marine Group crane is derived from a truck crane design.

These cranes can also work with high angles of inclination. The heel and trim angles indicated in the catalog are intended to be the static angles at which the crane can rotate and simultaneously hoist and dynamically handle 100% capacity.

All the cranes are provided with a powerful rotation system composed of slewing-ring and motor reducers, perfectly driving the crane even with high angles of inclination or relevant side forces.

All structures have been designed to take up heavy lateral forces. Looking at the cranes structures you will recognize that all articulation points are specially reinforced to absorb overloads.

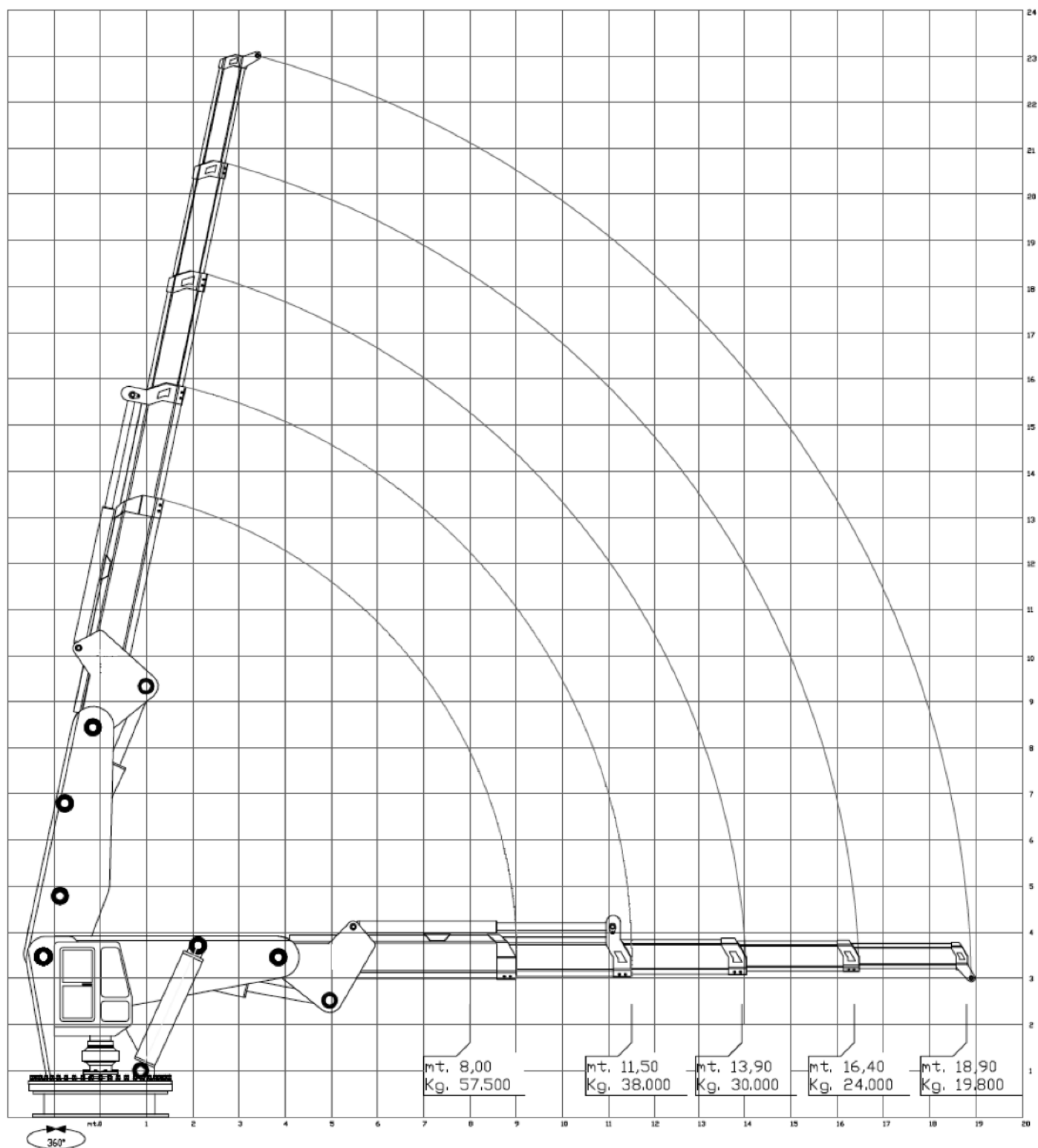
Normally pins and bronze bushing are also bigger than the competitors cranes as the crane's design is undertaken considering a rotation at relevant heel and trim angles while simultaneously allowing hoisting and handling of 100% crane capacity.

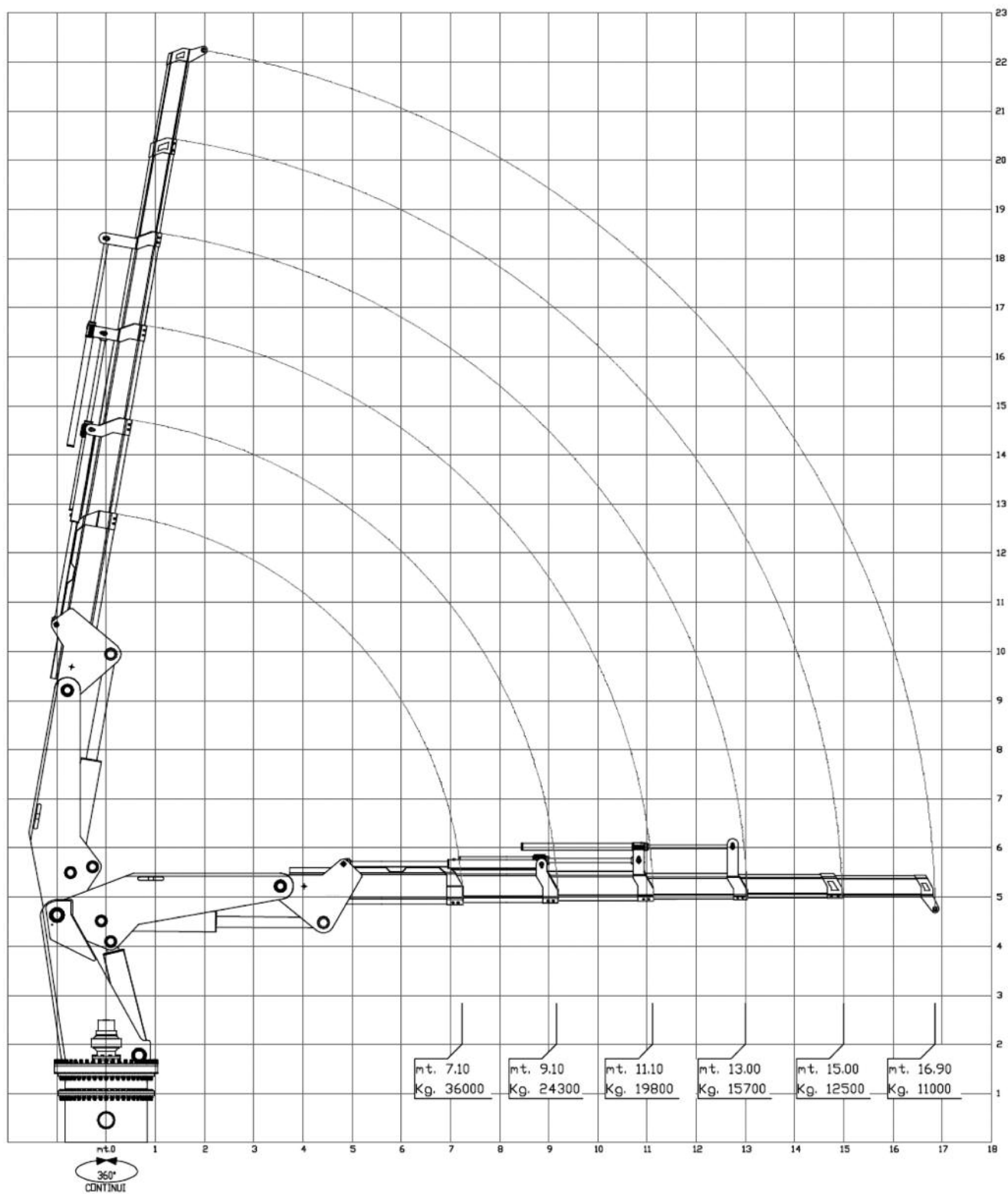
Knuckle Boom Cranes

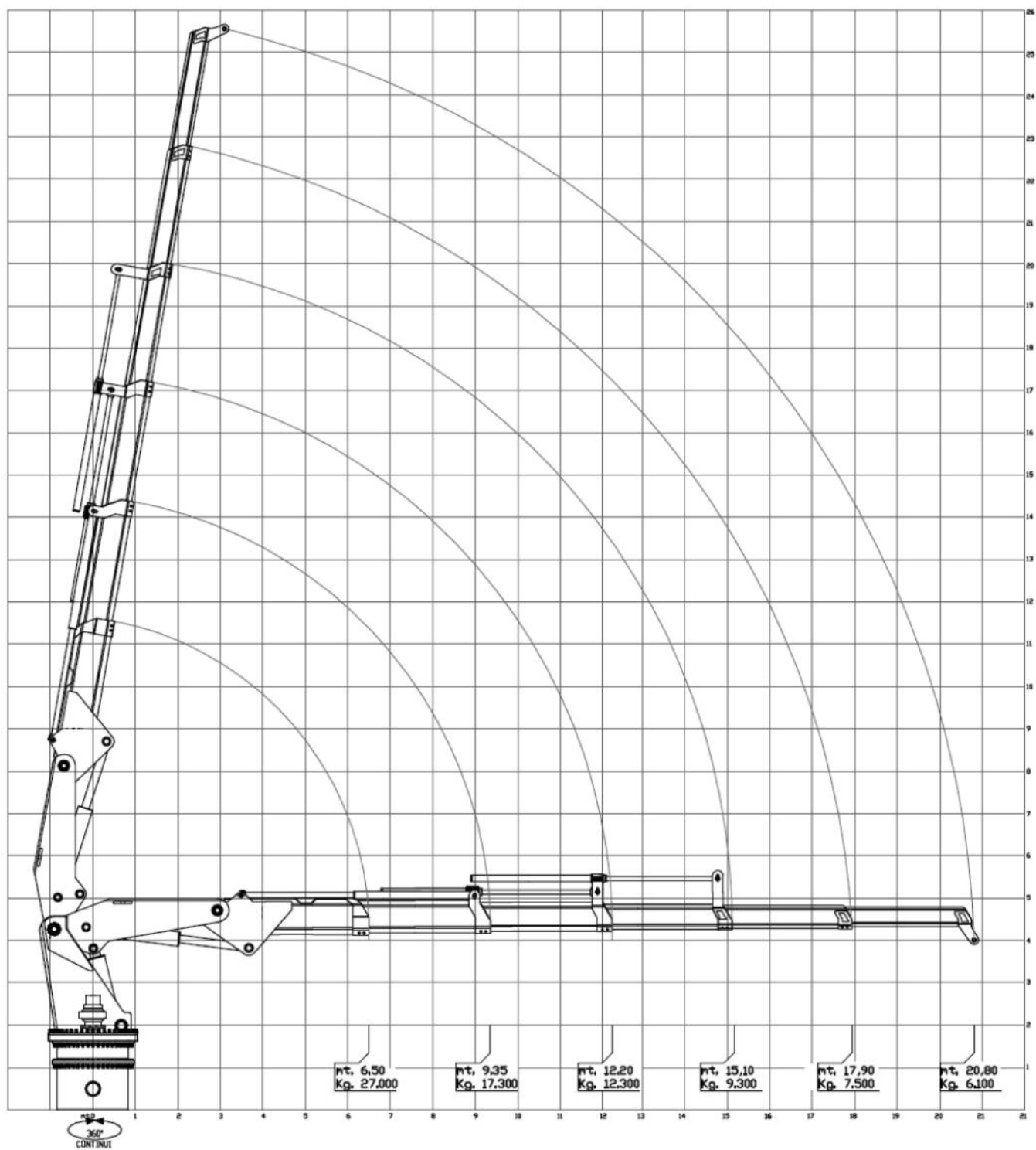
DMW Marine Group knuckle boom cranes are available in standard capacities up to 800 ton meter (tm) or as represented in our model 800.000 EX6 92,000 kg capacity at 8 meters (202,000 lbs. at 26 feet). Representative load and reach charts are found on the following pages for all of our standard knuckle boom cranes from 60 tm to 800 tm.

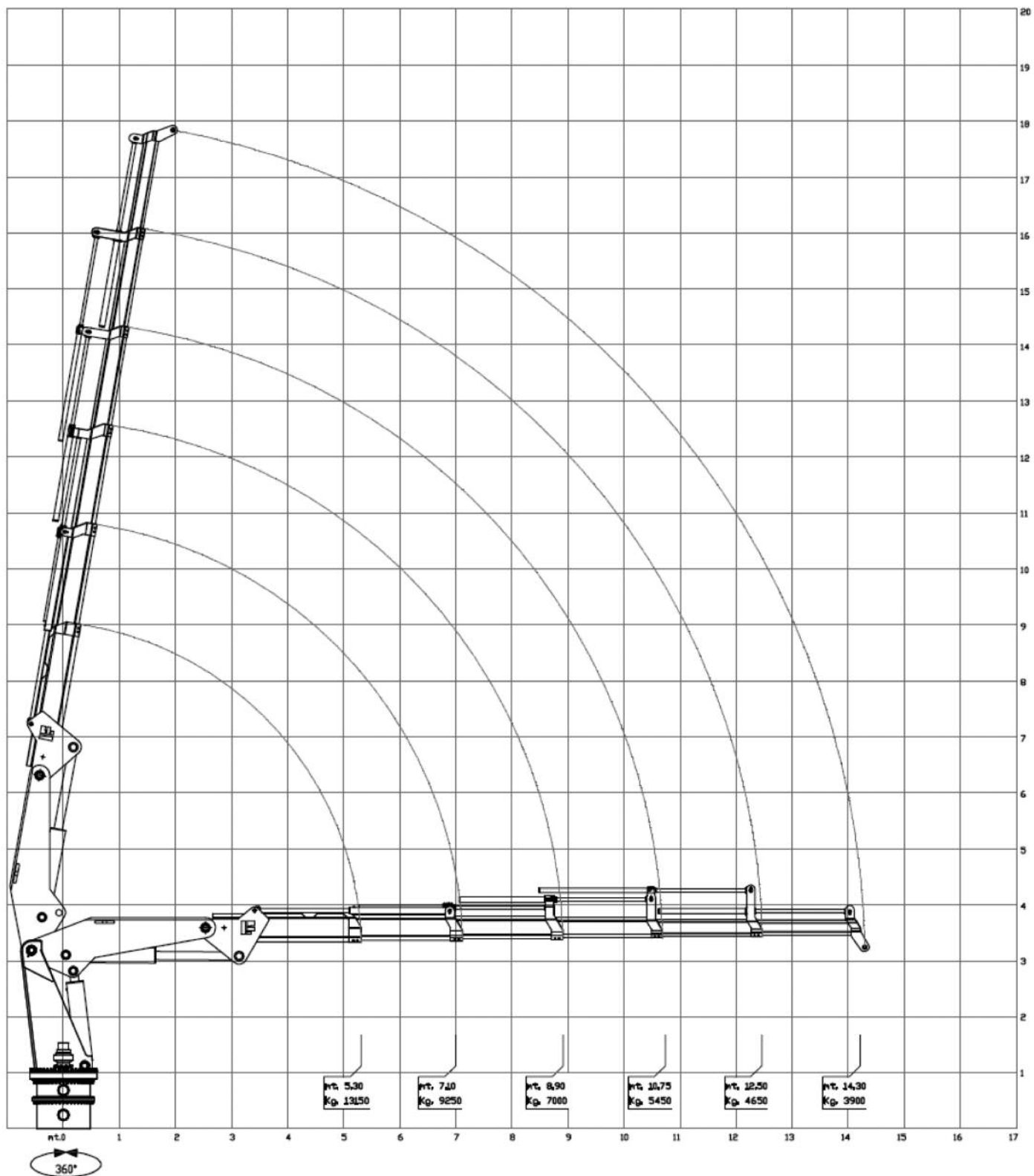
Our cranes are designed for operation in harbor and at sea and are available with ratings for both. DMW uses design criteria so that each model is designed and built according to ABS and API rules and regulations. Using higher tensile steel, thicker plates, larger diameter pins and bushings DMW knuckle booms out lift and out last the competition.

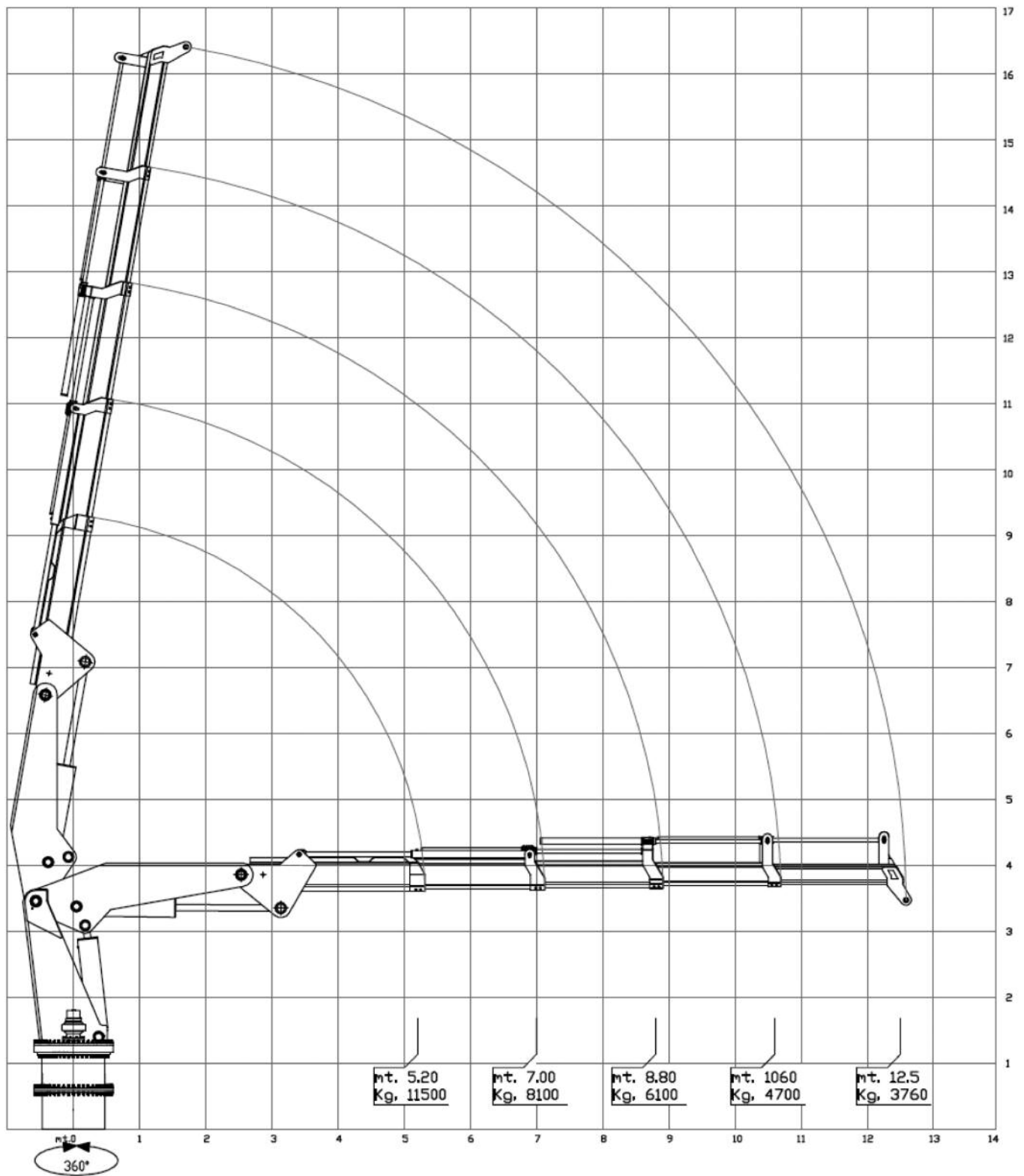












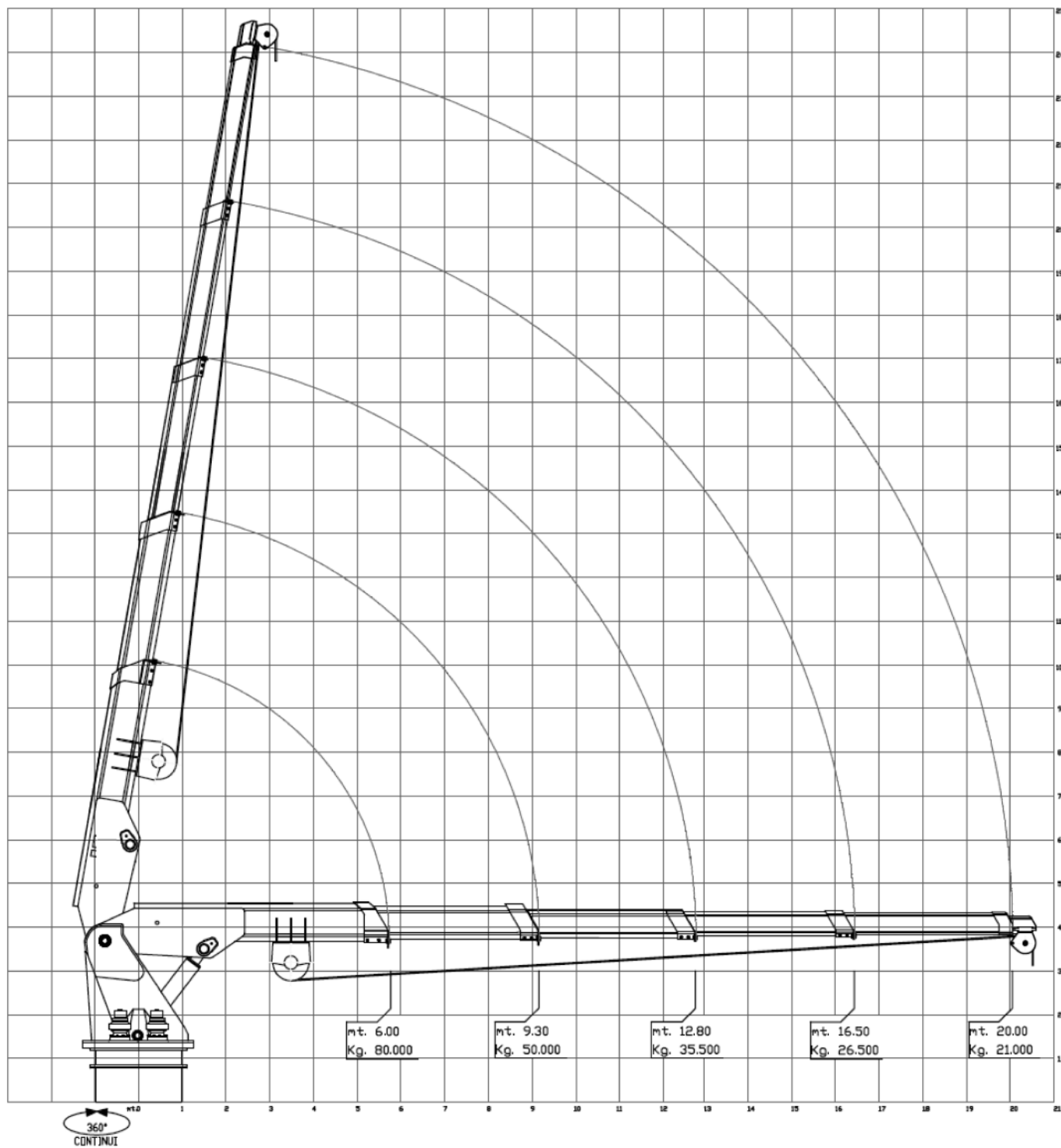
Telescoping Cranes

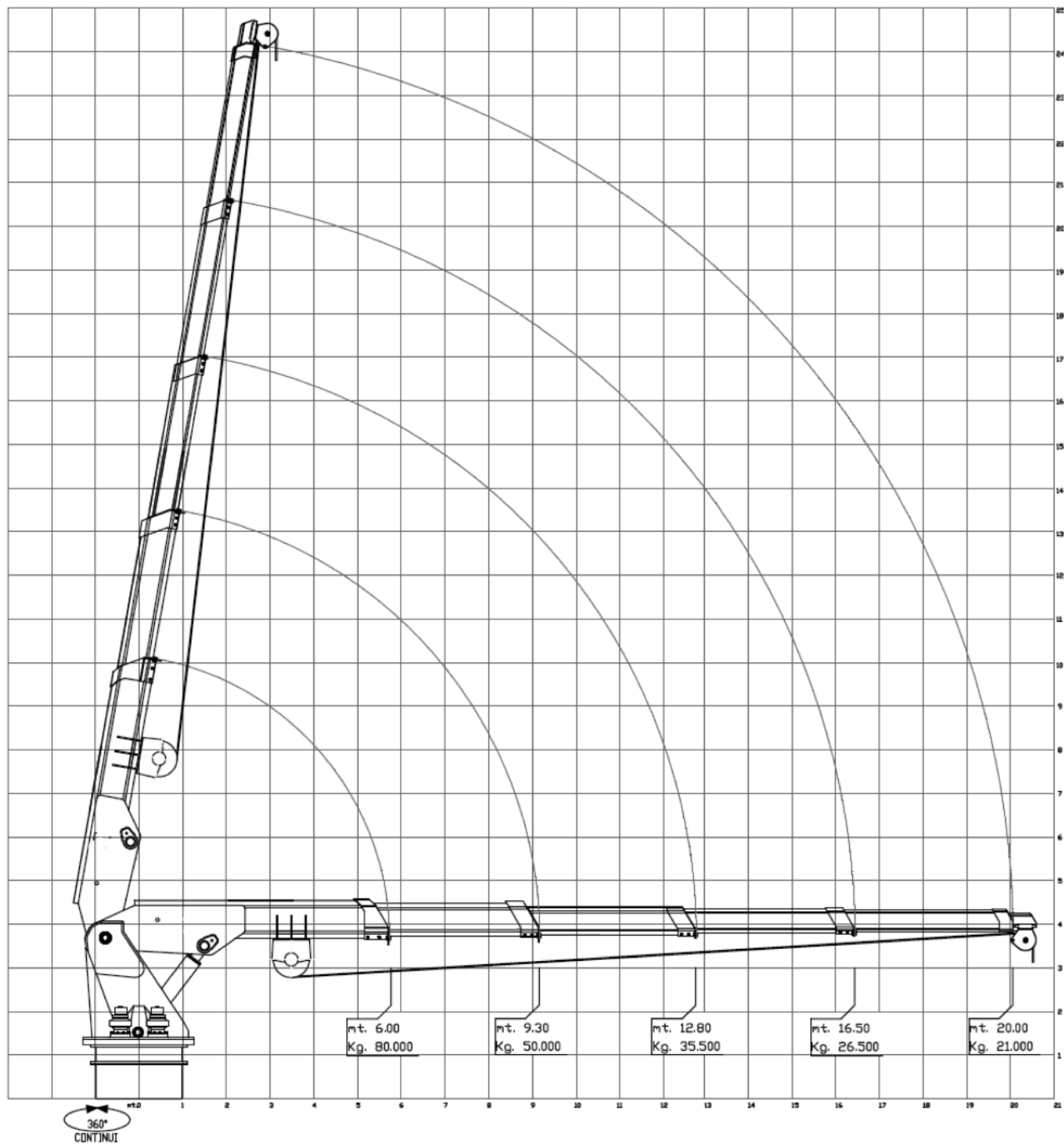
DMW Marine Group telescoping cranes are available in any reach and capacity. On the following pages are standard telescoping cranes that have already been designed and built.

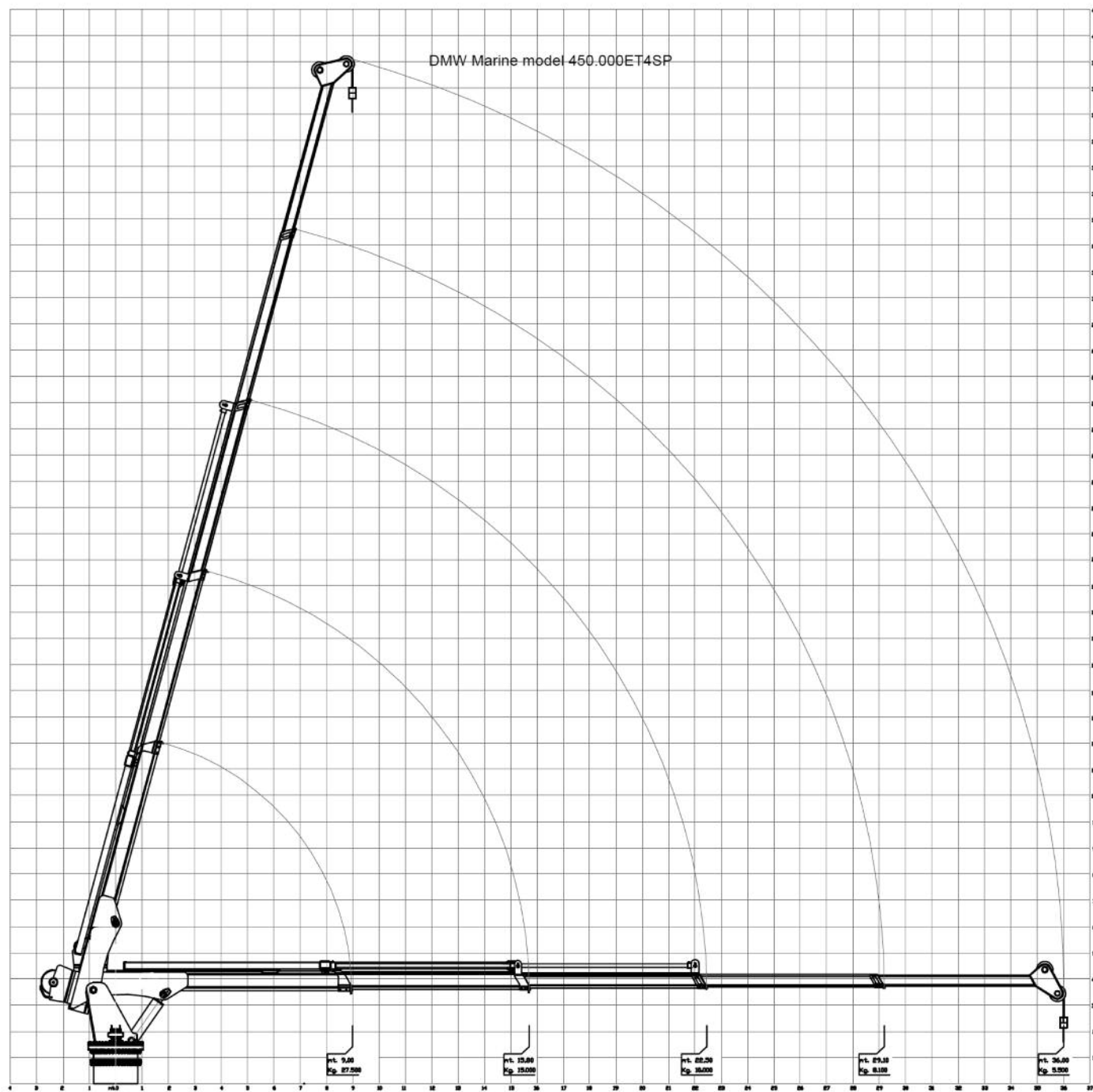
Using rigorous standards of design DMW telescoping cranes are very robust. Multiple slewing drives are incorporated for booms being used in high sea states with optional cabins, remote controls and winches as standard accessories.

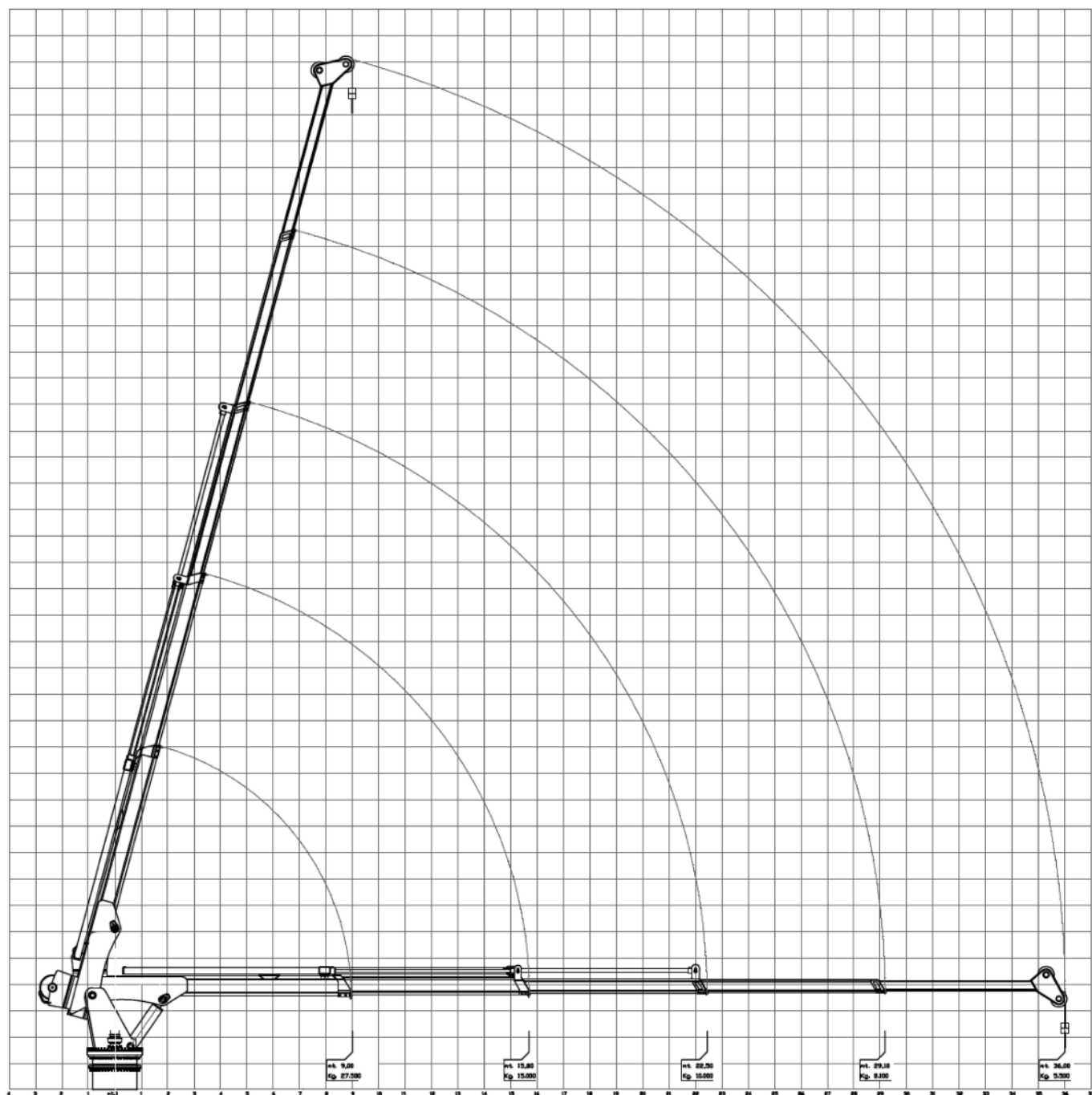
All of our telescoping cranes are available with ABS, DnV Lloyds certifications.

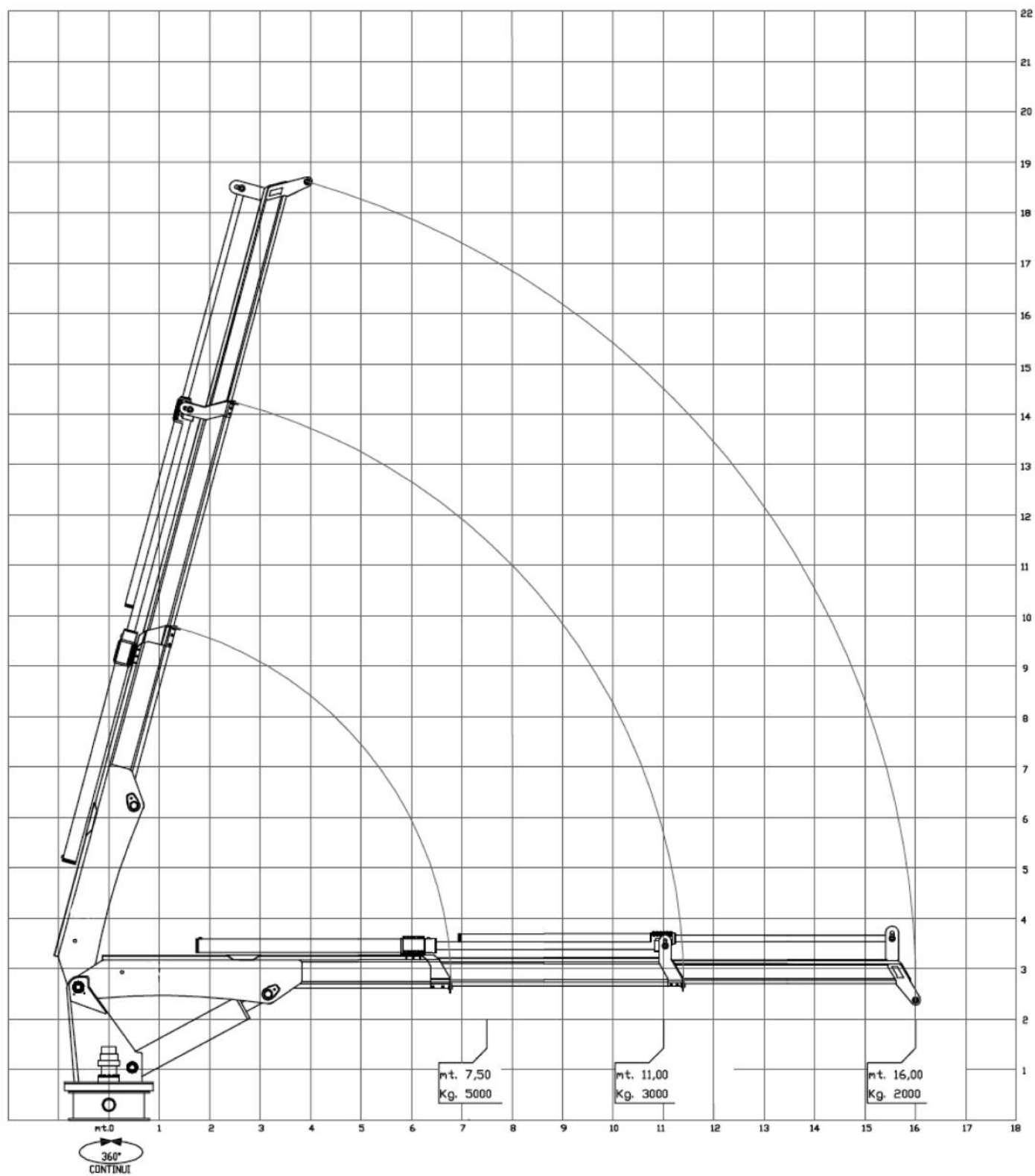












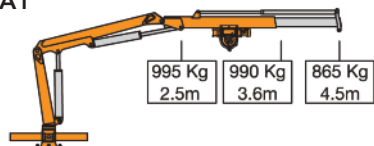
Small Marine Cranes

DMW Marine Group small marine cranes from 4 to 60 ton meter are designed to be light in weight but robust enough for the most demanding work.

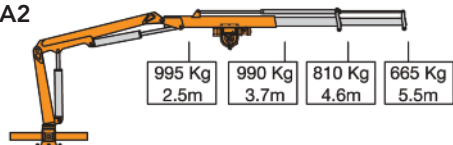
Most frequently used by smaller workboats, fishing vessels and the Aqua culture industry these smaller cranes are designed using the DIN 15018 standards. They can work all day all year and last longer than the competition. Under 38 ton meter our rotation system uses dual rack and pinion cylinders providing enormous torque for slewing in challenging situations.



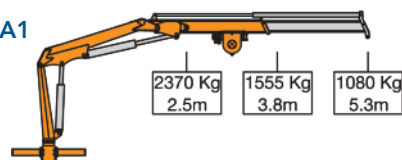
M 40.90A1



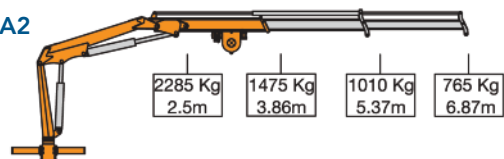
M 40.90A2



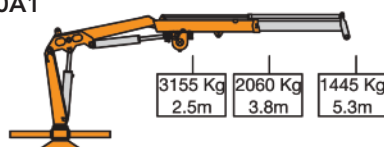
M 60.90A1



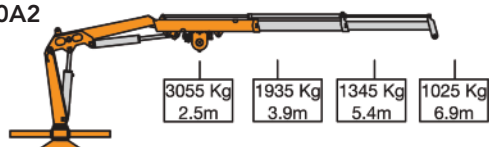
M 60.90A2



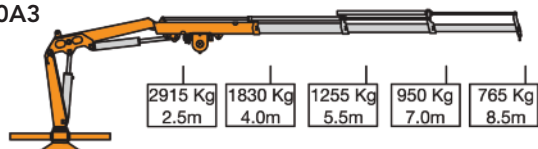
M 75.90A1



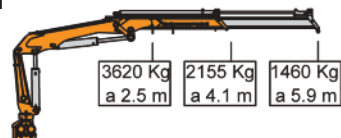
M 75.90A2



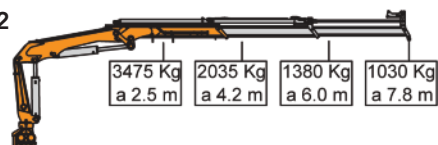
M 75.90A3



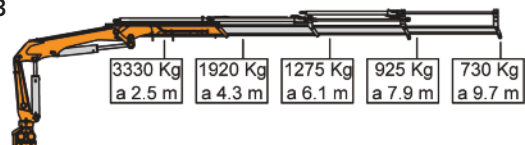
M 95.20A1



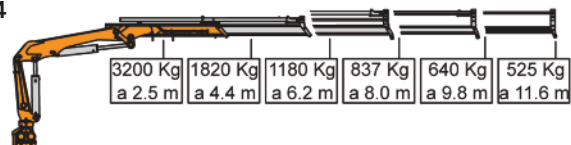
M 95.20A2



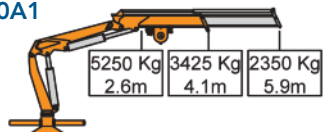
M 95.20A3



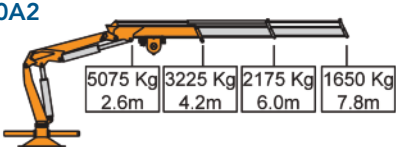
M 95.20A4



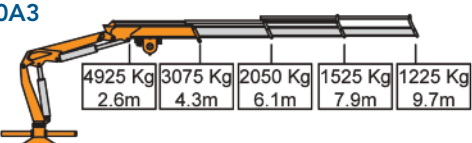
M 140.90A1



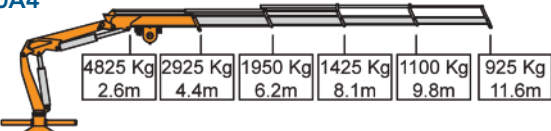
M 140.90A2



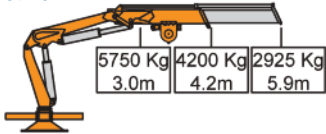
M 140.90A3



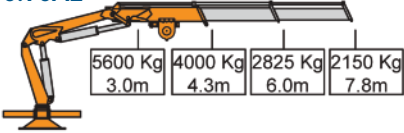
M 140.90A4



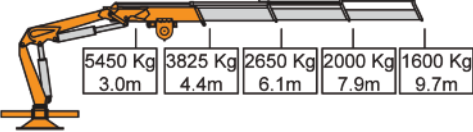
M 170.90A1



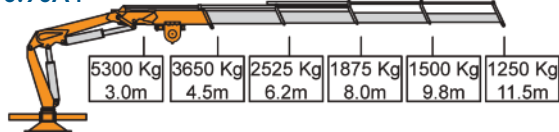
M 170.90A2



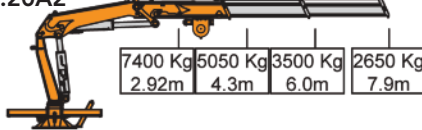
M 170.90A3



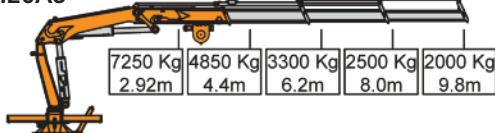
M 170.90A4



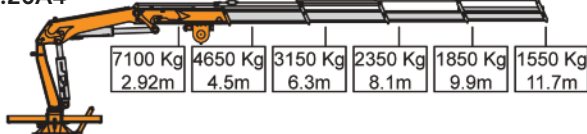
M 230.20A2



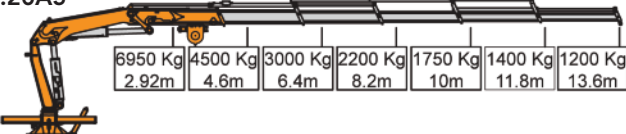
M 230.20A3



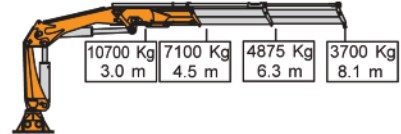
M 230.20A4



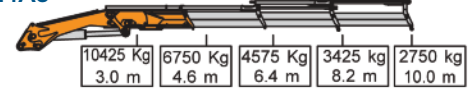
M 230.20A5



M 330.24A2



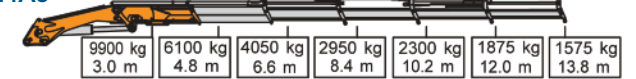
M 330.24A3



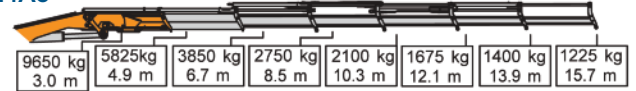
M 330.24A4



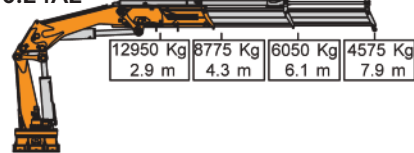
M 330.24A5



M 330.24A6



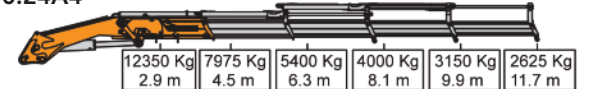
M 400.24A2



M 400.24A3



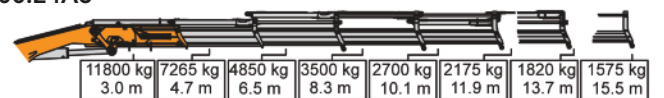
M 400.24A4



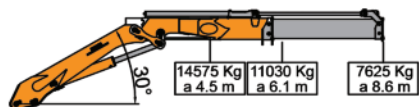
M 400.24A5



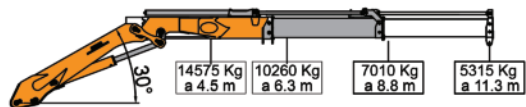
M 400.24A6



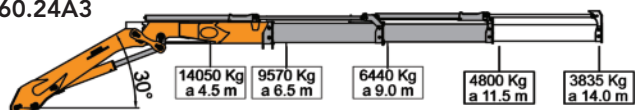
M 660.24A1



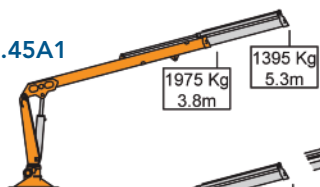
M 660.24A2



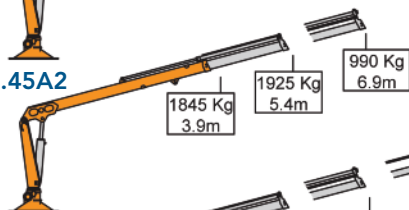
M 660.24A3



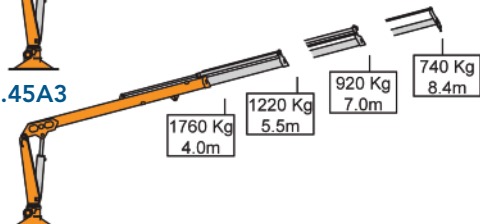
MR 75.45A1



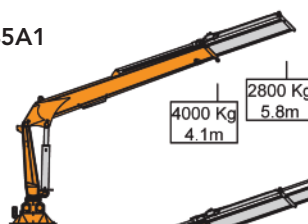
MR 75.45A2



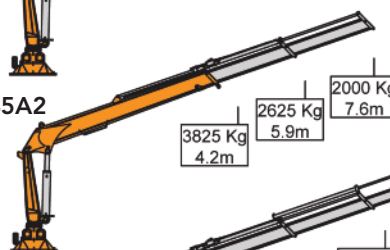
MR 75.45A3



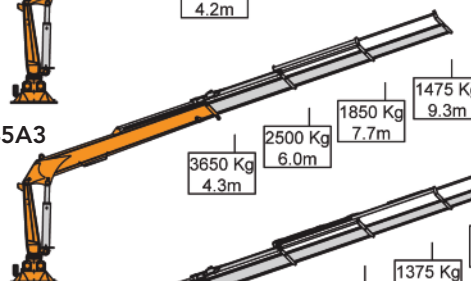
MR 178.45A1



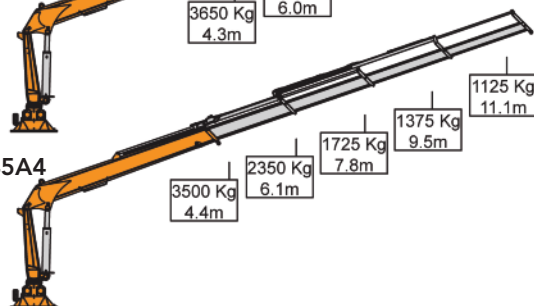
MR 178.45A2



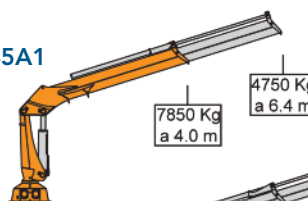
MR 178.45A3



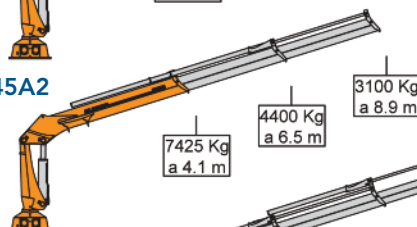
MR 178.45A4



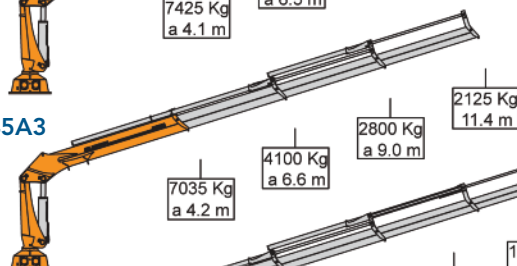
MR 330.45A1



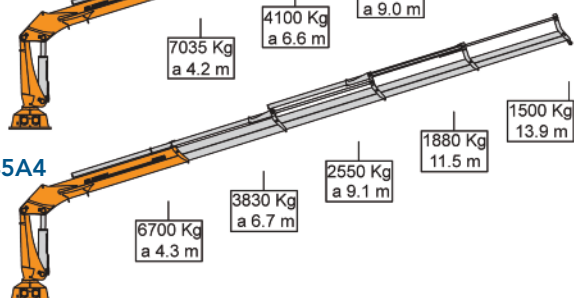
MR 330.45A2



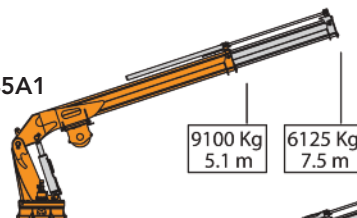
MR 330.45A3



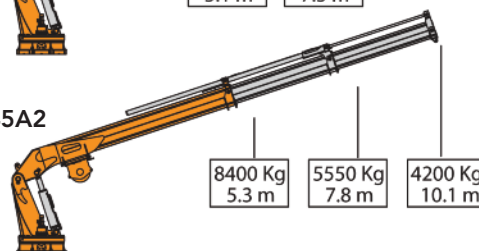
MR 330.45A4

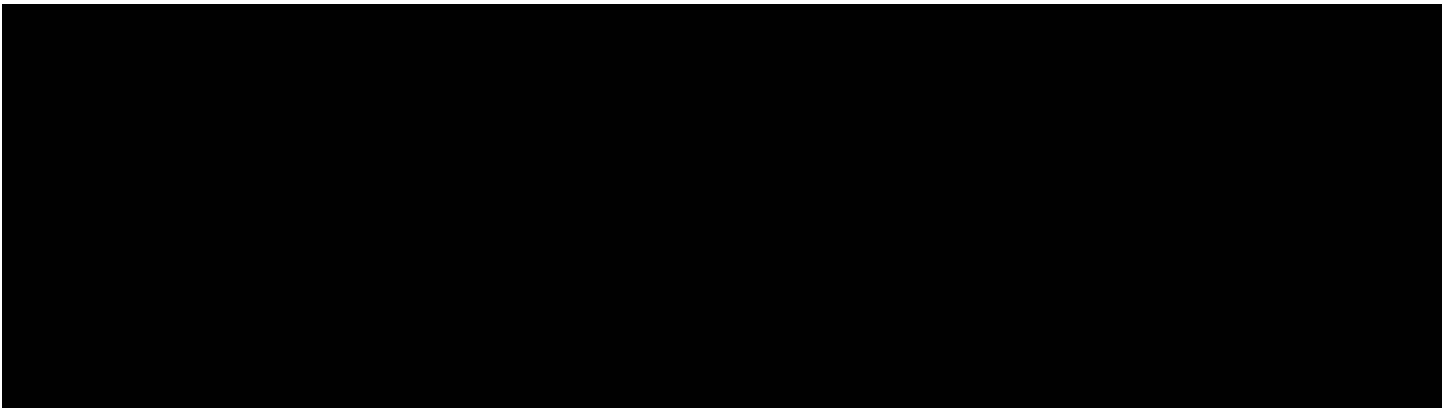


MR 500.45A1

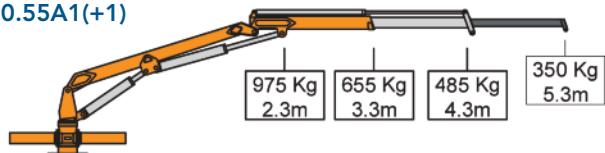


MR 500.45A2

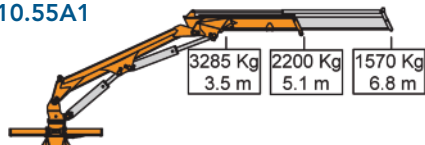




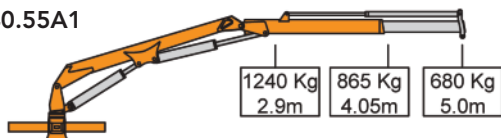
MC 20.55A1(+1)



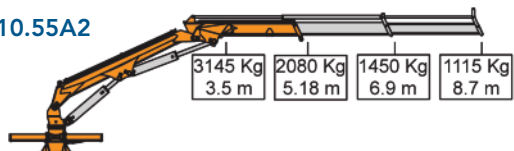
MC 110.55A1



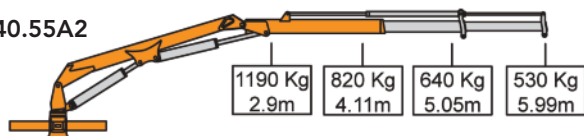
MC 40.55A1



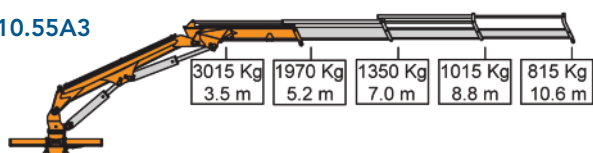
MC 110.55A2



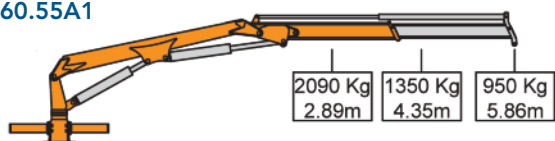
MC 40.55A2



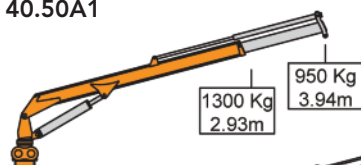
MC 110.55A3



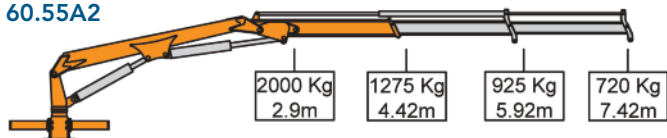
MC 60.55A1



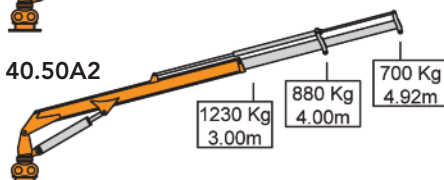
MRC 40.50A1



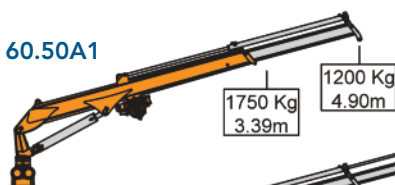
MC 60.55A2



MRC 40.50A2



MRC 60.50A1



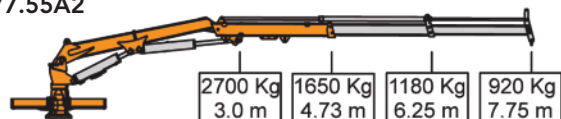
MC 77.55A1



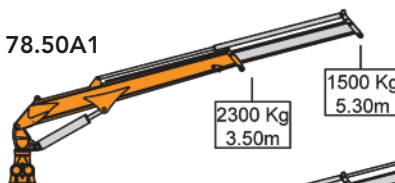
MRC 60.50A2



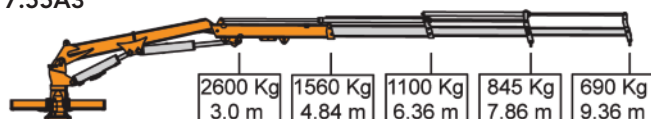
MC 77.55A2



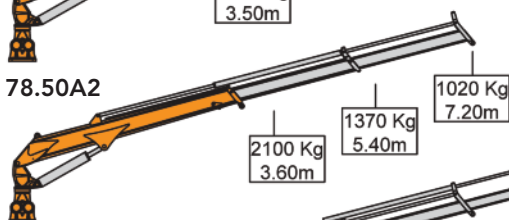
MRC 78.50A1



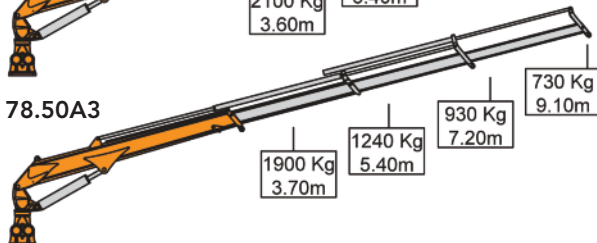
MC 77.55A3



MRC 78.50A2



MRC 78.50A3



Special Application Cranes

DMW Marine Group offers many different special application cranes and continues to design and build these for newer applications.

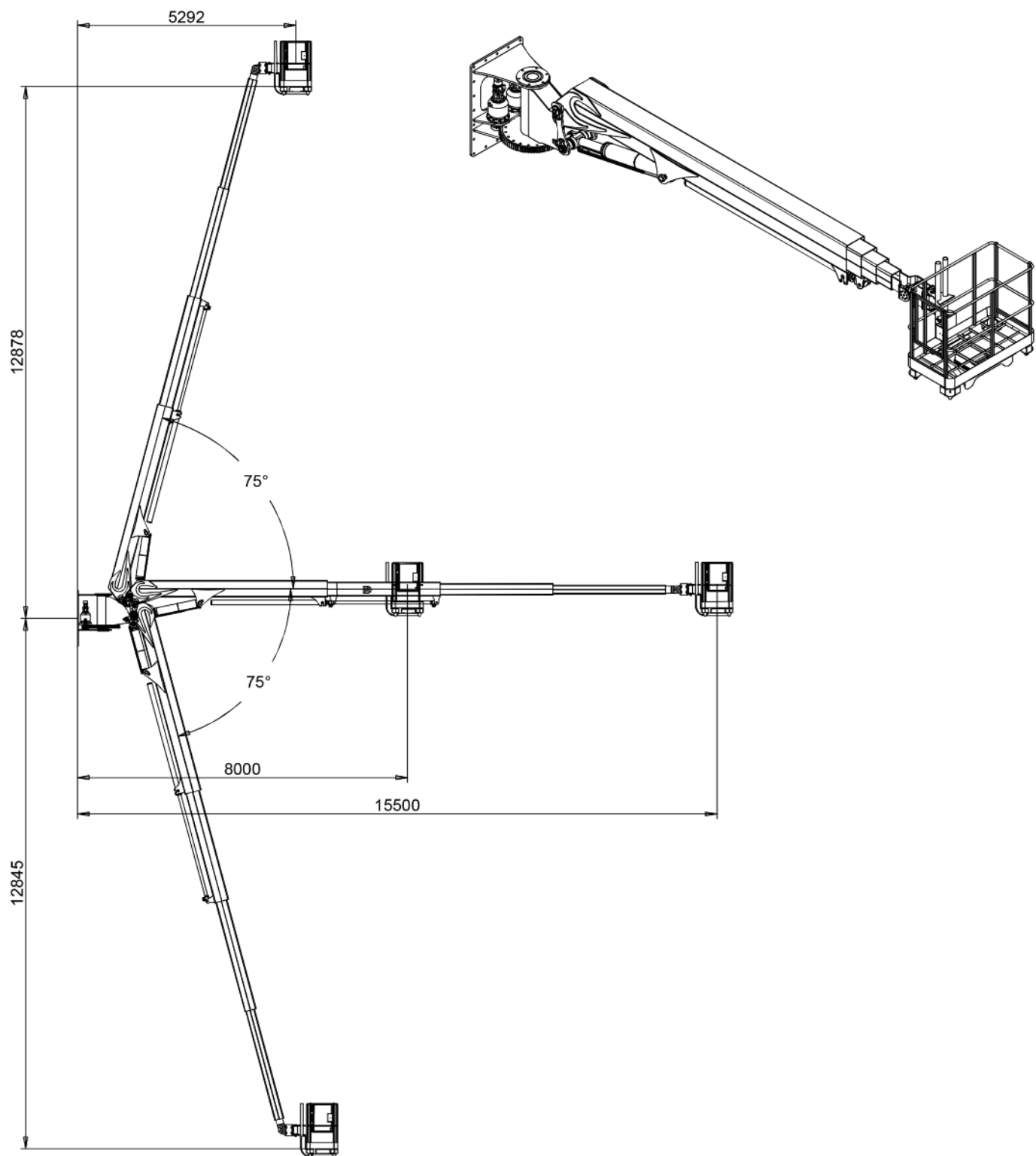
Our largest market for special applications is for use on offshore oil rigs especially the new Deepwater vessels.

- Our most popular special application cranes are the combined foldable crane – maintenance baskets that are used in the moon pool and drill floor for handling goods up to 12,950 kg and with the quick disconnect feature the sheave head assembly is removed and a personnel basket attached allowing maintenance to be carried out 17 meters above the drill floor or 15 meters into the moon pool area. These cranes are ABS approved and certified and come with winch installed, radio remote controls, escape harnesses, load indicators and accumulators in the rare case for total hydraulic power is lost on the rig.
- Pipe handling cranes by DMW Marine Group for use on drill ships are varied by reach and capacity
- Flareboom handling cranes
- Barge lid handling cranes for handling the lids on barges reducing man power needs and increasing the turnaround time
- Yacht cranes with low profile and great reach and capacities





► **DMW Model 800 Stabbing Basket**



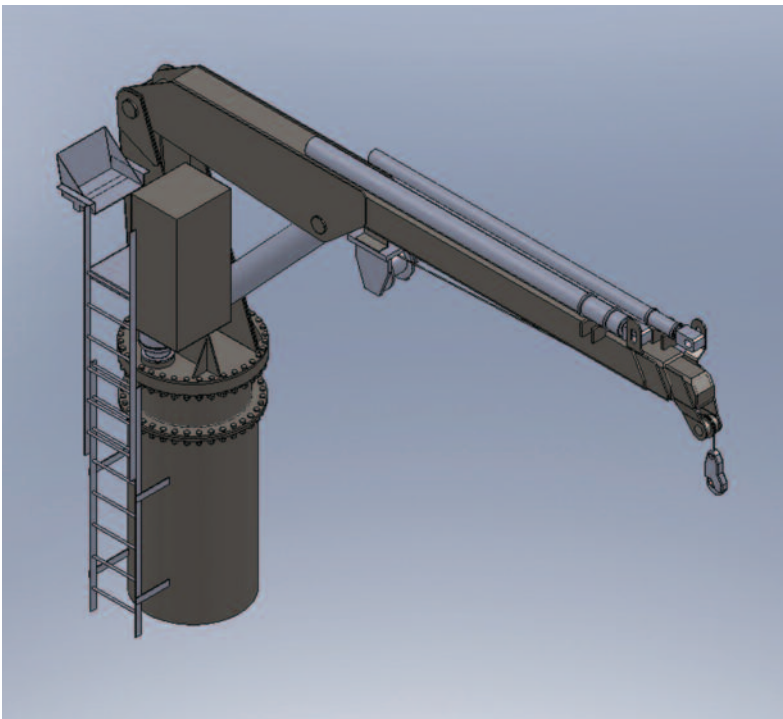
► 3500EX3-LP



Collapsible cranes for yachts



► SOLAS Certified Boat Handling Cranes





Crescent Dunes Project in final assembly — These solar power tower cranes are installed on 650 ft. tall solar towers with a capacity to lift 50,000 lbs.

Service and After Sales

DMW Marine Group believes that it is in ours and our customer's best interests to maintain close contact not only in the purchase period, but also throughout the equipment lifetime. This way our customers will get the best products and we will continue to improve. Our responsibility does not stop after installation!

DMW Marine Group provides full after-sales service direct from the factory (utilizing DMW Marine Group service and maintenance department) and via our network of local dealers abroad (world wide network service). Our world wide service network is based on our dealers being leading companies (involved in marine equipment supply and service) with experienced technicians who receive support and training from DMW Marine Group.

DMW Marine Group service and maintenance departments work in close collaboration with our world wide service networks and are always available to provide you the best service and will assist you directly when required.

DMW Marine Group Service and Maintenance Department

DMW Marine Group has trained and authorized service personnel ready to assist you world wide. We offer the best training and support systems to our service partners and customers.

World Wide Service Network

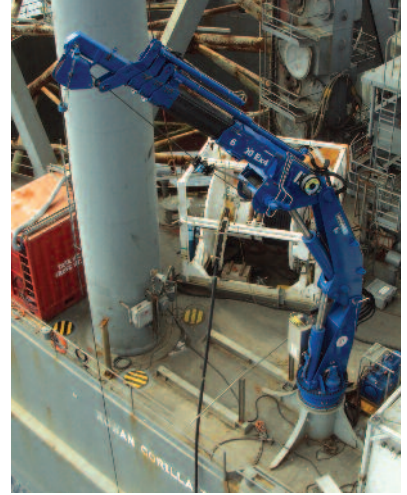
DMW Marine Group uses responsible dealers who work to our standards and are approved to undertake services and sales on behalf of DMW Marine Group.

Our world wide dealer service network is able to assure you the best service in any part of the world.

Spare Parts

We have every confidence in our spare parts system that has been built up over a number of years. The modular approach and the wide stock of spare parts and components ensure our customers receive speedy and efficient service. Our Service Department is always available with experienced technicians and a stock of original spare parts.

Moreover, all the components we utilize are from suppliers with a world wide sales network.



1123 St. Matthews Road • Chester Springs, PA 19425 • phone 610.827.2032
www.dmwmarginegroup.com